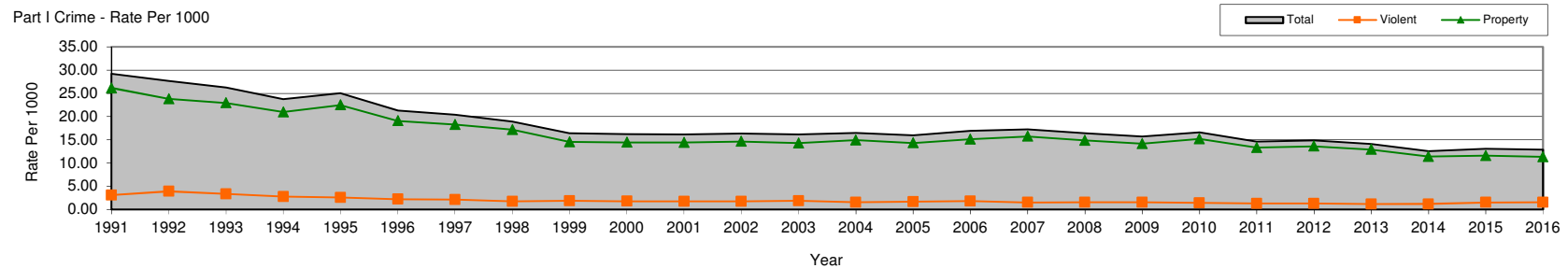
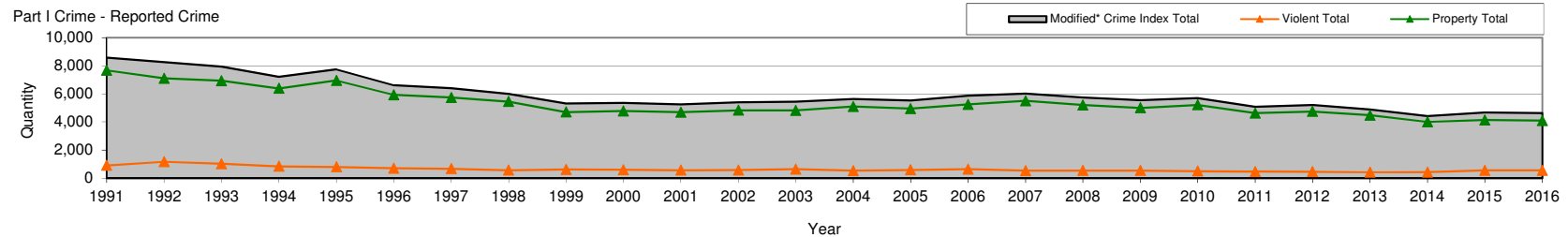


Crime in the United States
Ventura County
Part I Reported Crime

Ventura County Sheriff Jurisdiction Totals				Part I Crimes									Numeric		Rate Per 1000		
Year	Population*	Crime Index Total	Modified* Crime Index Total	Murder and Non-negligent Manslaughter	Forcible Rape	Robbery	Aggravated Assault	Burglary	Larceny-Theft	Motor Vehicle Theft	Arson*	Crimes Per Day	Violent Total	Property Total	Total	Violent	Property
1991	293,458	8,453	8,572	16	82	151	652	2,497	4,241	814	119	23.48	901	7,671	29.21	3.07	26.14
1992	297,908	8,131	8,252	5	60	182	913	2,071	4,212	688	121	22.61	1160	7,092	27.70	3.89	23.81
1993	302,017	7,813	7,942	12	70	169	762	1,905	4,192	703	129	21.76	1013	6,929	26.30	3.35	22.94
1994	303,978	7,137	7,216	9	66	163	596	1,559	4,050	694	79	19.77	834	6,382	23.74	2.74	20.99
1995	308,982	7,664	7,742	10	55	146	581	1,563	4,559	750	78	21.21	792	6,950	25.06	2.56	22.49
1996	310,378	6,476	6,611	7	36	130	517	1,396	3,838	552	135	18.11	690	5,921	21.30	2.22	19.08
1997	313,219	6,306	6,394	8	63	104	488	1,393	3,774	476	88	17.52	663	5,731	20.41	2.12	18.30
1998	316,869	5,940	5,997	6	43	121	386	1,398	3,533	453	57	16.43	556	5,441	18.93	1.75	17.17
1999	322,789	5,223	5,302	11	44	105	446	1,154	3,126	337	79	14.53	606	4,696	16.43	1.88	14.55
2000	329,931	5,298	5,351	7	57	85	435	983	3,377	354	53	14.66	584	4,767	16.22	1.77	14.45
2001	324,621	5,178	5,244	5	40	100	414	935	3,304	380	66	14.37	559	4,685	16.15	1.72	14.43
2002	329,443	5,322	5,391	2	46	94	425	973	3,392	390	69	14.77	567	4,824	16.36	1.72	14.64
2003	337,340	5,342	5,443	14	44	93	477	1,029	3,274	411	101	14.91	628	4,815	16.14	1.86	14.27
2004	341,106	5,570	5,630	5	33	90	404	1,170	3,363	505	60	15.42	532	5,098	16.51	1.56	14.95
2005	344,954	5,453	5,518	8	52	140	379	1,165	3,316	393	65	15.12	579	4,939	16.00	1.68	14.32
2006	346,729	5,804	5,870	8	40	115	467	1,163	3,595	416	66	16.08	630	5,240	16.93	1.82	15.11
2007	348,972	5,972	6,019	4	47	107	369	1,149	3,965	331	47	16.49	527	5,492	17.25	1.51	15.74
2008	349,189	5,674	5,736	8	52	129	349	1,090	3,747	299	62	15.72	538	5,198	16.43	1.54	14.89
2009	352,182	5,478	5,533	8	53	134	343	1,050	3,631	259	55	15.16	538	4,995	15.71	1.53	14.18
2010	343,187	5,644	5,701	4	47	115	324	1,017	3,898	239	57	15.62	490	5,211	16.61	1.43	15.18
2011	346,625	5,014	5,071	5	35	107	308	902	3,439	218	57	13.89	455	4,616	14.63	1.31	13.32
2012	348,384	5,145	5,192	7	48	98	299	876	3,540	277	47	14.22	452	4,740	14.90	1.30	13.61
2013	346,905	4,837	4,889	2	34	104	271	913	3,220	293	52	13.39	411	4,478	14.09	1.18	12.91
2014	350,991	4,378	4,410	3	80	60	272	854	2,861	248	32	12.08	415	3,995	12.56	1.18	11.38
2015	357,400	4,627	4,674	6	88	83	365	819	2,973	293	47	12.81	542	4,132	13.08	1.52	11.56
2016	360,333	4,585	4,630	6	99	94	349	791	2,919	327	45	12.68	548	4,082	12.85	1.52	11.33

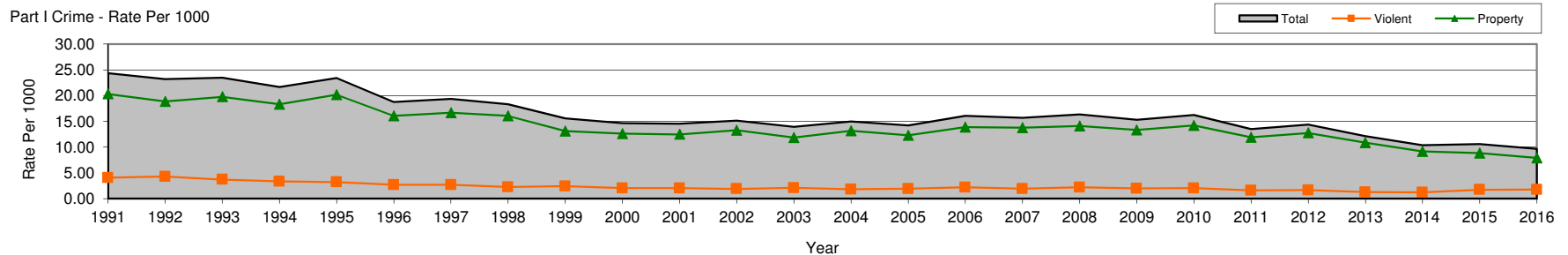
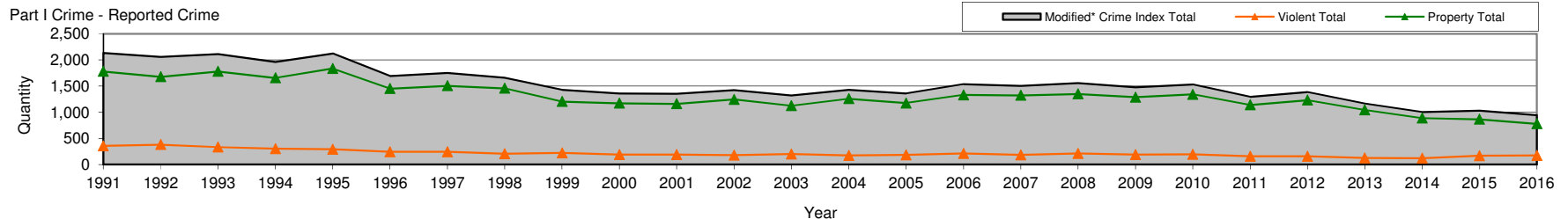


Crime source: FBI UCR Publication Years 1991 through 2010, 2011-2016 Information provided by local jurisdiction.

*Population from Dept. of Finance Report E-1 Report

Crime in the United States
Ventura County
Part I Reported Crime

Unincorporated				Part I Crimes										Numeric		Rate Per 1000		
Year	Population*	Crime Index Total	Modified* Crime Index Total	Murder and Non-negligent Manslaughter	Forcible Rape	Robbery	Aggravated Assault	Burglary	Larceny-Theft	Motor Vehicle Theft	Arson*	Crimes Per Day	Violent Total	Property Total	Total	Violent	Property	
1991	87,700	2,101	2,136	12	39	25	280	677	869	199	35	5.85	356	1,780	24.36	4.06	20.30	
1992	88,900	2,010	2,059	3	30	38	311	555	913	160	49	5.64	382	1,677	23.16	4.30	18.86	
1993	90,300	2,071	2,117	6	25	33	270	628	936	173	46	5.80	334	1,783	23.44	3.70	19.75	
1994	90,800	1,934	1,963	6	25	56	217	559	903	168	29	5.38	304	1,659	21.62	3.35	18.27	
1995	91,000	2,096	2,128	6	17	38	231	551	1,072	181	32	5.83	292	1,836	23.38	3.21	20.18	
1996	90,500	1,653	1,693	3	18	24	197	435	854	122	40	4.64	242	1,451	18.71	2.67	16.03	
1997	90,700	1,713	1,753	6	31	25	182	437	891	141	40	4.80	244	1,509	19.33	2.69	16.64	
1998	90,900	1,638	1,663	5	14	25	162	418	877	137	25	4.56	206	1,457	18.29	2.27	16.03	
1999	92,000	1,399	1,429	5	20	24	174	334	744	98	30	3.92	223	1,206	15.53	2.42	13.11	
2000	93,127	1,345	1,360	4	16	12	157	340	708	108	15	3.73	189	1,171	14.60	2.03	12.57	
2001	93,400	1,338	1,355	3	13	25	150	298	730	119	17	3.71	191	1,164	14.51	2.04	12.46	
2002	94,100	1,404	1,424	1	13	16	148	318	786	122	20	3.90	178	1,246	15.13	1.89	13.24	
2003	95,200	1,299	1,323	9	16	21	152	315	651	135	24	3.62	198	1,125	13.90	2.08	11.82	
2004	95,544	1,420	1,430	3	8	17	145	334	764	149	10	3.92	173	1,257	14.97	1.81	13.16	
2005	95,820	1,338	1,361	3	22	28	132	332	680	141	23	3.73	185	1,176	14.20	1.93	12.27	
2006	96,016	1,512	1,541	6	13	29	161	370	814	119	29	4.22	209	1,332	16.05	2.18	13.87	
2007	96,102	1,487	1,506	1	13	24	146	317	891	95	19	4.13	184	1,322	15.67	1.91	13.76	
2008	95,813	1,538	1,562	4	20	35	153	345	891	90	24	4.28	212	1,350	16.30	2.21	14.09	
2009	96,829	1,460	1,478	6	20	26	137	352	836	83	18	4.05	189	1,289	15.26	1.95	13.31	
2010	94,581	1,515	1,535	1	18	31	142	349	894	80	20	4.21	192	1,343	16.23	2.03	14.20	
2011	96,013	1,279	1,296	2	10	23	120	273	795	56	17	3.55	155	1,141	13.50	1.61	11.88	
2012	96,589	1,368	1,387	5	14	20	118	331	794	86	19	3.80	157	1,230	14.36	1.63	12.73	
2013	96,554	1,149	1,168	2	13	23	84	307	648	72	19	3.20	122	1,046	12.10	1.26	10.83	
2014	97,250	999	1,007	2	25	7	85	256	563	61	8	2.76	119	888	10.35	1.22	9.13	
2015	97,733	1,018	1,033	3	32	16	118	236	530	83	15	2.83	169	864	10.57	1.73	8.84	
2016	98,323	938	949	2	29	19	121	224	467	76	11	2.60	171	778	9.65	1.74	7.91	



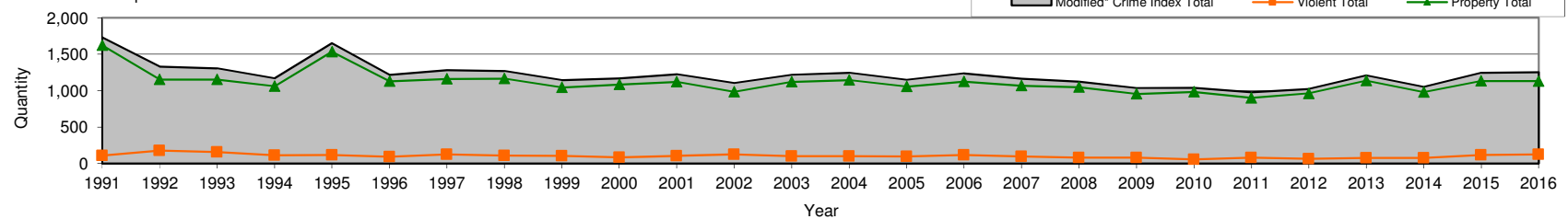
Crime source: FBI UCR Publication Years 1991 through 2010, 2011-2016 Information provided by local jurisdiction.

*Population from Dept. of Finance Report E-1 Report

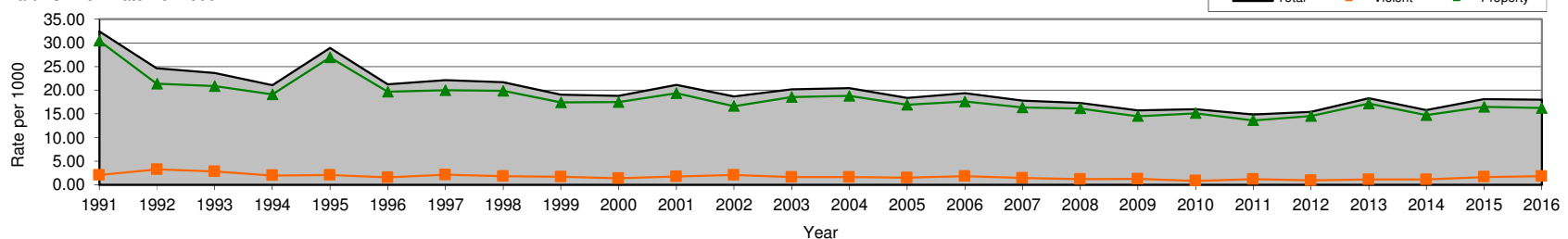
Crime in the United States
Ventura County
Part I Reported Crime

Camarillo				Part I Crimes								Numeric			Rate Per 1000		
Year	Population*	Crime Index Total	Modified* Crime Index Total	Murder and Non-negligent Manslaughter	Forcible Rape	Robbery	Aggravated Assault	Burglary	Larceny-Theft	Motor Vehicle Theft	Arson*	Crimes Per Day	Violent Total	Property Total	Total	Violent	Property
1991	53,392	1,720	1,732	0	11	23	74	493	939	180	12	4.75	108	1,624	32.44	2.02	30.42
1992	54,247	1,314	1,333	1	4	42	130	315	730	92	19	3.65	177	1,156	24.57	3.26	21.31
1993	55,372	1,292	1,308	0	13	41	100	263	790	85	16	3.58	154	1,154	23.62	2.78	20.84
1994	55,762	1,154	1,172	0	12	25	72	182	748	115	18	3.21	109	1,063	21.02	1.95	19.06
1995	57,019	1,642	1,650	1	8	34	73	272	1,091	163	8	4.52	116	1,534	28.94	2.03	26.90
1996	57,540	1,212	1,219	0	0	26	63	236	777	110	7	3.34	89	1,130	21.19	1.55	19.64
1997	58,243	1,277	1,285	1	9	22	90	269	802	84	8	3.52	122	1,163	22.06	2.09	19.97
1998	58,708	1,263	1,272	1	8	36	62	217	851	88	9	3.48	107	1,165	21.67	1.82	19.84
1999	60,217	1,128	1,147	3	8	18	72	230	738	59	19	3.14	101	1,046	19.05	1.68	17.37
2000	62,287	1,165	1,171	0	11	20	53	188	848	45	6	3.21	84	1,087	18.80	1.35	17.45
2001	58,138	1,204	1,225	0	9	27	66	187	835	80	21	3.36	102	1,123	21.07	1.75	19.32
2002	59,174	1,091	1,105	1	12	27	82	152	749	68	14	3.03	122	983	18.67	2.06	16.61
2003	60,500	1,175	1,218	2	10	15	70	234	774	70	43	3.34	97	1,121	20.13	1.60	18.53
2004	61,142	1,230	1,248	0	5	21	74	279	743	108	18	3.42	100	1,148	20.41	1.64	18.78
2005	62,739	1,139	1,152	1	15	30	48	259	710	76	13	3.16	94	1,058	18.36	1.50	16.86
2006	64,075	1,233	1,240	2	10	28	74	231	789	99	7	3.40	114	1,126	19.35	1.78	17.57
2007	65,601	1,156	1,165	0	8	22	64	205	794	63	9	3.19	94	1,071	17.76	1.43	16.33
2008	65,120	1,115	1,126	2	9	25	41	220	756	62	11	3.08	77	1,049	17.29	1.18	16.11
2009	66,087	1,031	1,037	0	8	28	44	167	729	55	6	2.84	80	957	15.69	1.21	14.48
2010	65,199	1,026	1,039	0	3	12	39	167	763	42	13	2.85	54	985	15.94	0.83	15.11
2011	66,140	961	980	2	10	17	50	160	675	47	19	2.68	79	901	14.82	1.19	13.62
2012	66,407	1,016	1,023	0	5	21	35	139	767	49	7	2.80	61	962	15.41	0.92	14.49
2013	66,428	1,203	1,212	0	6	25	42	205	849	76	9	3.32	73	1,139	18.25	1.10	17.15
2014	66,715	1,038	1,052	0	14	21	38	154	755	56	14	2.88	73	979	15.77	1.09	14.67
2015	68,861	1,229	1,246	2	16	30	65	217	840	59	17	3.41	113	1,133	18.09	1.64	16.45
2016	69,924	1,249	1,256	4	21	32	67	202	824	99	7	3.44	124	1,132	17.96	1.77	16.19

Part I Crime - Reported Crime



Part I Crime - Rate Per 1000



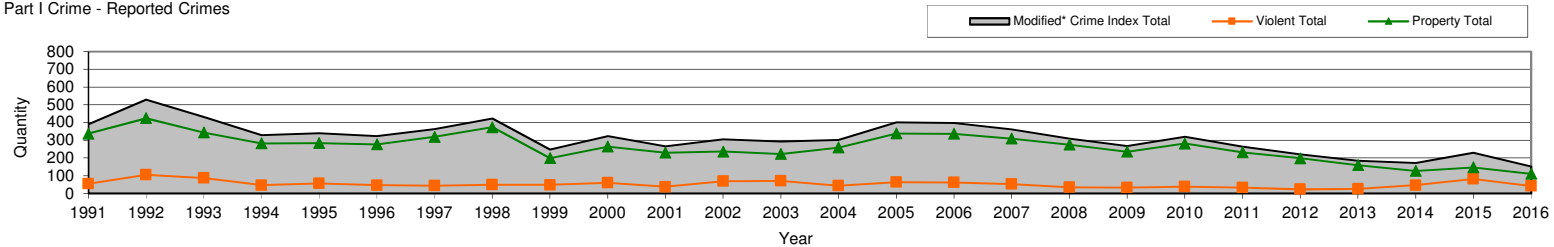
Crime source: FBI UCR Publication Years 1991 through 2010, 2011-2016 Information provided by local jurisdiction.

*Population from Dept. of Finance Report E-1 Report

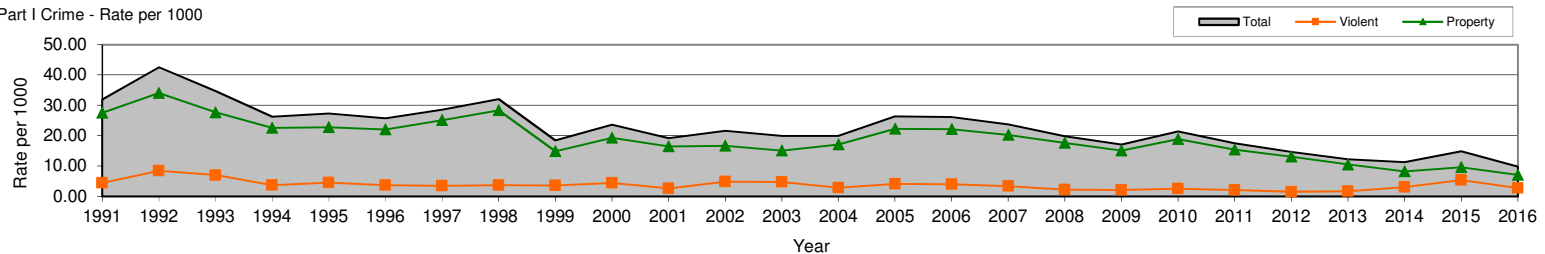
Crime in the United States
Ventura County
Part I Reported Crime

Fillmore				Part I Crimes								Numeric			Rate Per 1000		
Year	Population*	Crime Index Total	Modified* Crime Index Total	Murder and Non-negligent Manslaughter	Forcible Rape	Robbery	Aggravated Assault	Burglary	Larceny- Theft	Motor Vehicle Theft	Arson*	Crimes Per Day	Violent Total	Property Total	Total	Violent	Property
1991	12,241	390	391	1	3	5	45	120	190	26	1	1.07	54	337	31.94	4.41	27.53
1992	12,437	525	529	0	3	9	93	158	239	23	4	1.45	105	424	42.53	8.44	34.09
1993	12,435	425	431	1	7	5	74	124	182	32	6	1.18	87	344	34.66	7.00	27.66
1994	12,522	327	328	0	2	5	39	110	153	18	1	0.90	46	282	26.19	3.67	22.52
1995	12,461	335	340	1	2	3	50	92	162	25	5	0.93	56	284	27.29	4.49	22.79
1996	12,575	320	323	0	1	4	41	71	176	27	3	0.88	46	277	25.69	3.66	22.03
1997	12,728	359	363	0	1	10	33	97	206	12	4	0.99	44	319	28.52	3.46	25.06
1998	13,171	419	422	0	2	14	33	153	192	25	3	1.16	49	373	32.04	3.72	28.32
1999	13,376	245	247	0	1	10	37	56	132	9	2	0.68	48	199	18.47	3.59	14.88
2000	13,717	319	324	0	4	7	49	40	200	19	5	0.89	60	264	23.62	4.37	19.25
2001	13,897	263	266	0	3	6	28	55	152	19	3	0.73	37	229	19.14	2.66	16.48
2002	14,145	300	305	0	0	10	59	50	168	13	5	0.84	69	236	21.56	4.88	16.68
2003	14,700	290	292	2	3	7	58	57	134	29	2	0.80	70	222	19.86	4.76	15.10
2004	15,121	301	301	1	0	8	34	72	163	23	0	0.82	43	258	19.91	2.84	17.06
2005	15,222	395	401	0	0	14	49	72	239	21	6	1.10	63	338	26.34	4.14	22.20
2006	15,170	391	397	0	2	6	53	56	235	39	6	1.09	61	336	26.17	4.02	22.15
2007	15,247	358	361	1	1	8	42	51	235	20	3	0.99	52	309	23.68	3.41	20.27
2008	15,538	305	308	0	1	7	26	54	190	27	3	0.84	34	274	19.82	2.19	17.63
2009	15,622	267	267	0	2	12	18	51	171	13	0	0.73	32	235	17.09	2.05	15.04
2010	14,902	315	319	2	2	5	29	51	206	20	4	0.87	38	281	21.41	2.55	18.86
2011	15,085	262	264	0	2	17	13	35	164	31	2	0.72	32	232	17.50	2.12	15.38
2012	15,145	221	221	2	0	4	17	27	148	23	0	0.61	23	198	14.59	1.52	13.07
2013	15,175	178	185	0	1	4	21	26	106	20	7	0.51	26	159	12.19	1.71	10.48
2014	15,333	169	172	0	1	3	42	32	75	16	3	0.47	46	126	11.22	3.00	8.22
2015	15,407	224	229	1	10	6	65	40	80	22	5	0.63	82	147	14.86	5.32	9.54
2016	15,529	142	152	0	4	5	33	20	69	11	10	0.42	42	110	9.79	2.70	7.08

Part I Crime - Reported Crimes



Part I Crime - Rate per 1000



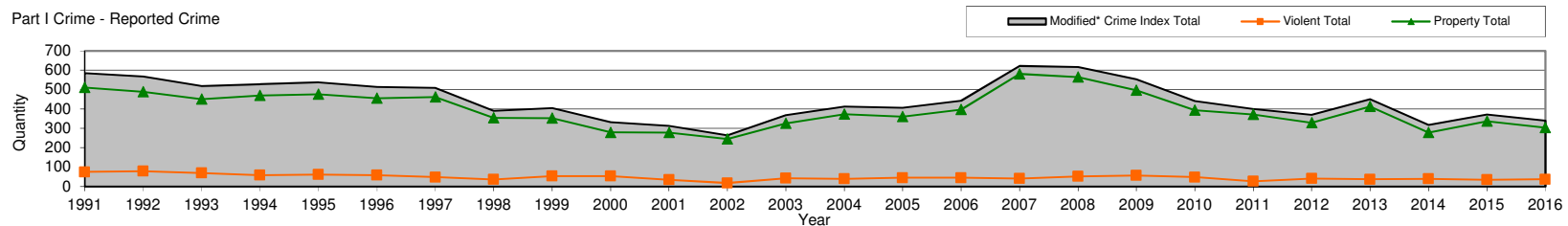
Crime source: FBI UCR Publication Years 1991 through 2010, 2011-2016 Information provided by local jurisdiction.

*Population from Dept. of Finance Report E-1 Report

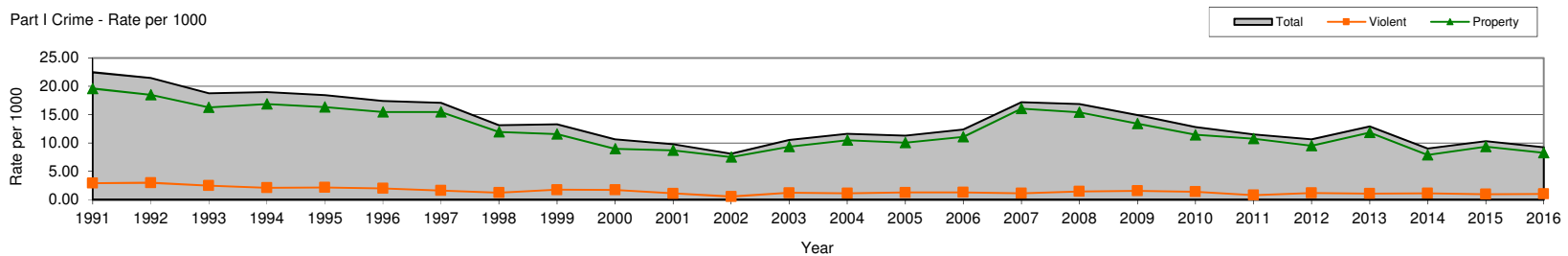
Crime in the United States
Ventura County
Part I Reported Crime

Moorpark				Part I Crimes								Numeric			Rate Per 1000		
Year	Population*	Crime Index Total	Modified* Crime Index Total	Murder and Non-negligent Manslaughter	Forcible Rape	Robbery	Aggravated Assault	Burglary	Larceny- Theft	Motor Vehicle Theft	Arson*	Crimes Per Day	Violent Total	Property Total	Total	Violent	Property
1991	26,025	575	585	1	6	14	54	149	305	46	10	1.60	75	510	22.48	2.88	19.60
1992	26,442	561	568	0	4	11	64	171	261	50	7	1.56	79	489	21.48	2.99	18.49
1993	27,639	511	519	1	3	12	53	159	239	44	8	1.42	69	450	18.78	2.50	16.28
1994	27,833	525	528	2	7	13	36	138	286	43	3	1.45	58	470	18.97	2.08	16.89
1995	29,163	532	538	2	3	6	51	125	288	57	6	1.47	62	476	18.45	2.13	16.32
1996	29,429	505	513	1	7	11	39	148	267	32	8	1.41	58	455	17.43	1.97	15.46
1997	29,788	499	509	0	3	9	36	120	303	28	10	1.39	48	461	17.09	1.61	15.48
1998	29,660	386	390	0	2	12	22	111	207	32	4	1.07	36	354	13.15	1.21	11.94
1999	30,430	399	405	1	2	13	37	121	185	40	6	1.11	53	352	13.31	1.74	11.57
2000	31,133	329	332	0	3	8	42	61	184	31	3	0.91	53	279	10.66	1.70	8.96
2001	31,999	309	313	1	3	6	25	52	196	26	4	0.86	35	278	9.78	1.09	8.69
2002	32,569	260	263	0	1	2	15	50	159	33	3	0.72	18	245	8.08	0.55	7.52
2003	34,940	366	368	0	3	7	32	54	240	30	2	1.01	42	326	10.53	1.20	9.33
2004	35,574	408	413	1	3	6	30	101	237	30	5	1.13	40	373	11.61	1.12	10.49
2005	35,908	402	406	2	2	9	32	91	238	28	4	1.11	45	361	11.31	1.25	10.05
2006	35,774	436	442	0	1	10	34	86	283	22	6	1.21	45	397	12.36	1.26	11.10
2007	36,150	620	622	0	4	12	25	111	432	36	2	1.70	41	581	17.21	1.13	16.07
2008	36,620	612	617	0	5	22	25	131	410	19	5	1.69	52	565	16.85	1.42	15.43
2009	37,051	550	553	0	1	25	31	119	352	22	3	1.52	57	496	14.93	1.54	13.39
2010	34,389	431	441	0	8	16	24	61	301	21	10	1.21	48	393	12.82	1.40	11.43
2011	34,629	392	399	0	1	10	16	83	261	21	7	1.09	27	372	11.52	0.78	10.74
2012	34,677	370	370	0	6	6	29	77	228	24	0	1.01	41	329	10.67	1.18	9.49
2013	34,904	447	450	0	3	7	27	69	315	26	3	1.23	37	413	12.89	1.06	11.83
2014	35,158	315	317	0	13	6	20	35	226	15	2	0.87	39	278	9.02	1.11	7.91
2015	36,064	371	372	0	4	7	24	78	233	25	1	1.02	35	337	10.31	0.97	9.34
2016	36,715	333	340	0	12	4	21	59	213	24	7	0.93	37	303	9.26	1.01	8.25

Part I Crime - Reported Crime



Part I Crime - Rate per 1000



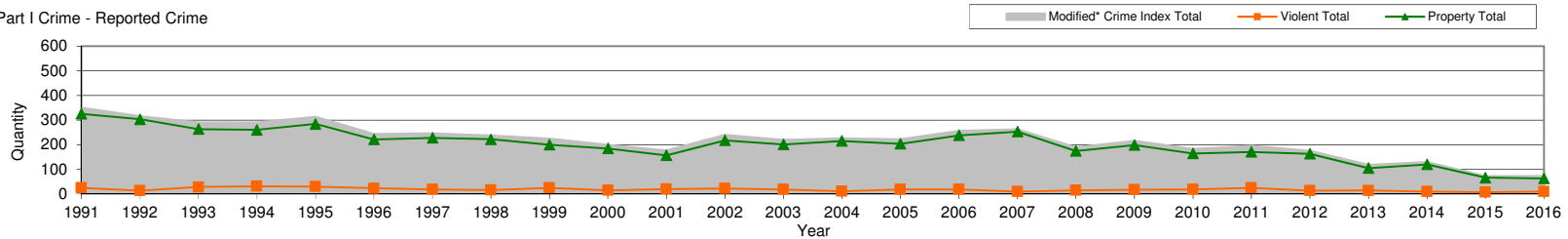
Crime source: FBI UCR Publication Years 1991 through 2010, 2011-2016 Information provided by local jurisdiction.

*Population from Dept. of Finance Report E-1 Report

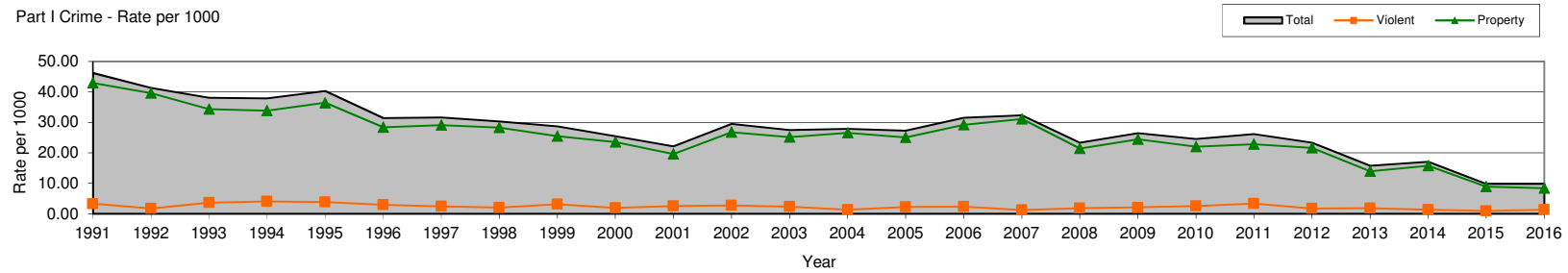
Crime in the United States
Ventura County
Part I Reported Crime

Ojai				Part I Crimes								Numeric			Rate Per 1000		
Year	Population*	Crime Index Total	Modified* Crime Index Total	Murder and Non-negligent Manslaughter	Forcible Rape	Robbery	Aggravated Assault	Burglary	Larceny-Theft	Motor Vehicle Theft	Arson*	Crimes Per Day	Violent Total	Property Total	Total	Violent	Property
1991	7,575	344	350	1	4	6	14	76	213	30	6	0.96	25	325	46.20	3.30	42.90
1992	7,650	314	316	0	2	3	8	86	204	11	2	0.87	13	303	41.31	1.70	39.61
1993	7,650	288	291	1	0	13	14	82	153	25	3	0.80	28	263	38.04	3.66	34.38
1994	7,675	286	291	0	2	4	25	74	159	22	5	0.80	31	260	37.92	4.04	33.88
1995	7,800	312	314	0	2	6	22	76	191	15	2	0.86	30	284	40.26	3.85	36.41
1996	7,775	239	244	0	1	1	21	59	148	9	5	0.67	23	221	31.38	2.96	28.42
1997	7,825	247	247	0	3	2	14	58	163	7	0	0.68	19	228	31.57	2.43	29.14
1998	7,850	237	238	0	2	2	12	50	153	18	1	0.65	16	222	30.32	2.04	28.28
1999	7,850	221	225	0	3	1	21	44	150	2	4	0.62	25	200	28.66	3.18	25.48
2000	7,862	200	200	0	0	1	14	28	151	6	0	0.55	15	185	25.44	1.91	23.53
2001	8,008	176	177	0	2	3	15	35	115	6	1	0.48	20	157	22.10	2.50	19.61
2002	8,151	237	240	0	2	4	16	39	171	5	3	0.66	22	218	29.44	2.70	26.75
2003	8,000	219	220	0	0	4	15	37	157	6	1	0.60	19	201	27.50	2.38	25.13
2004	8,100	222	226	0	1	2	8	51	152	8	4	0.62	11	215	27.90	1.36	26.54
2005	8,153	221	222	0	0	3	15	32	160	11	1	0.61	18	204	27.23	2.21	25.02
2006	8,149	256	257	0	1	1	17	53	178	6	1	0.70	19	238	31.54	2.33	29.21
2007	8,133	263	263	0	2	3	5	41	206	6	0	0.72	10	253	32.34	1.23	31.11
2008	8,114	187	189	0	1	3	11	32	133	7	2	0.52	15	174	23.29	1.85	21.44
2009	8,150	214	216	0	3	3	11	38	157	2	2	0.59	17	199	26.50	2.09	24.42
2010	7,461	182	183	0	0	1	18	31	128	4	1	0.50	19	164	24.53	2.55	21.98
2011	7,494	196	196	0	2	6	17	32	136	3	0	0.54	25	171	26.15	3.34	22.82
2012	7,535	175	176	0	0	1	12	24	133	5	1	0.48	13	163	23.36	1.73	21.63
2013	7,548	117	119	0	4	3	7	15	80	8	2	0.33	14	105	15.77	1.85	13.91
2014	7,593	130	130	0	2	1	7	20	94	6	0	0.36	10	120	17.12	1.32	15.80
2015	7,450	73	73	0	0	1	6	15	49	2	0	0.20	7	66	9.80	0.94	8.86
2016	7,477	73	73	0	3	1	6	14	44	5	0	0.20	10	63	9.76	1.34	8.43

Part I Crime - Reported Crime



Part I Crime - Rate per 1000



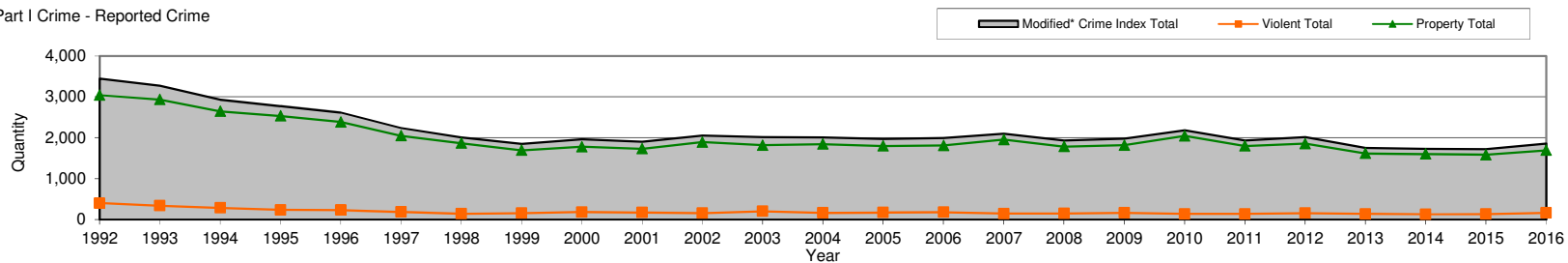
Crime source: FBI UCR Publication Years 1991 through 2010, 2011-2016 Information provided by local jurisdiction.

*Population from Dept. of Finance Report E-1 Report

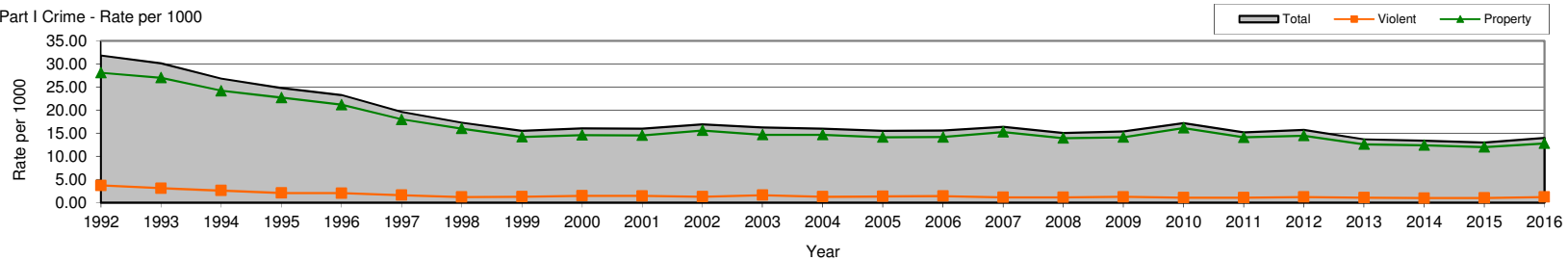
Crime in the United States
Ventura County
Part I Reported Crime

Thousand Oaks				Part I Crimes									Numeric		Rate Per 1000		
Year	Population*	Crime Index Total	Modified* Crime Index Total	Murder and Non-negligent Manslaughter	Forcible Rape	Robbery	Aggravated Assault	Burglary	Larceny-Theft	Motor Vehicle Theft	Arson*	Crimes Per Day	Violent Total	Property Total	Total	Violent	Property
1992	108,232	3,407	3,447	1	17	79	307	786	1,865	352	40	9.44	404	3,043	31.85	3.73	28.12
1993	108,621	3,226	3,276	3	22	65	251	649	1,892	344	50	8.98	341	2,935	30.16	3.14	27.02
1994	109,386	2,911	2,934	1	18	60	207	496	1,801	328	23	8.04	286	2,648	26.82	2.61	24.21
1995	111,539	2,747	2,772	0	23	59	154	447	1,755	309	25	7.59	236	2,536	24.85	2.12	22.74
1996	112,559	2,547	2,619	3	9	64	156	447	1,616	252	72	7.18	232	2,387	23.27	2.06	21.21
1997	113,935	2,211	2,237	1	16	36	133	412	1,409	204	26	6.13	186	2,051	19.63	1.63	18.00
1998	116,580	1,997	2,012	0	15	32	95	449	1,253	153	15	5.51	142	1,870	17.26	1.22	16.04
1999	118,916	1,831	1,849	2	10	39	105	369	1,177	129	18	5.07	156	1,693	15.55	1.31	14.24
2000	121,805	1,940	1,964	3	23	37	120	326	1,286	145	24	5.38	183	1,781	16.12	1.50	14.62
2001	119,179	1,888	1,908	1	10	33	130	308	1,276	130	20	5.23	174	1,734	16.01	1.46	14.55
2002	121,304	2,030	2,054	0	18	35	105	364	1,359	149	24	5.63	158	1,896	16.93	1.30	15.63
2003	124,000	1,993	2,022	1	12	39	150	332	1,318	141	29	5.54	202	1,820	16.31	1.63	14.68
2004	125,625	1,989	2,012	0	16	36	113	333	1,304	187	23	5.51	165	1,847	16.02	1.31	14.70
2005	127,112	1,958	1,976	2	13	56	103	379	1,289	116	18	5.41	174	1,802	15.55	1.37	14.18
2006	127,545	1,976	1,993	0	13	41	128	367	1,296	131	17	5.46	182	1,811	15.63	1.43	14.20
2007	127,739	2,088	2,102	2	19	38	87	424	1,407	111	14	5.76	146	1,956	16.46	1.14	15.31
2008	127,984	1,917	1,934	2	16	37	93	308	1,367	94	17	5.30	148	1,786	15.11	1.16	13.95
2009	128,443	1,956	1,982	2	19	40	102	323	1,386	84	26	5.43	163	1,819	15.43	1.27	14.16
2010	126,655	2,175	2,184	1	16	50	72	358	1,606	72	9	5.98	139	2,045	17.24	1.10	16.15
2011	127,264	1,924	1,936	1	10	34	92	319	1,408	60	12	5.30	137	1,799	15.21	1.08	14.14
2012	128,031	1,995	2,015	0	23	46	88	278	1,470	90	20	5.52	157	1,858	15.74	1.23	14.51
2013	128,143	1,743	1,755	0	7	42	90	291	1,222	91	12	4.81	139	1,616	13.70	1.08	12.61
2014	128,942	1,727	1,732	1	25	22	80	357	1,148	94	5	4.75	128	1,604	13.43	0.99	12.44
2015	131,885	1,712	1,721	0	26	23	87	233	1,241	102	9	4.72	136	1,585	13.05	1.03	12.02
2016	132,365	1,850	1,860	0	30	33	101	272	1,302	112	10	5.10	164	1,696	14.05	1.24	12.81

Part I Crime - Reported Crime



Part I Crime - Rate per 1000



Crime source: FBI UCR Publication Years 1991 through 2010, 2011-2016 Information provided by local jurisdiction.

*Population from Dept. of Finance Report E-1 Report